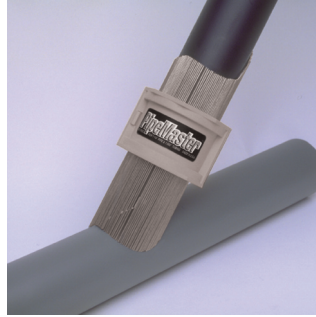


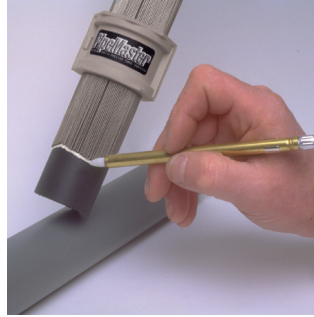
Basic Instructions



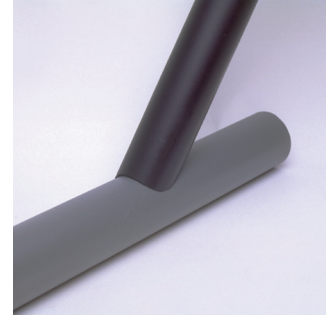
1. Slip over pipe



2. Push down



3. Transfer & cut



4. Ready to weld

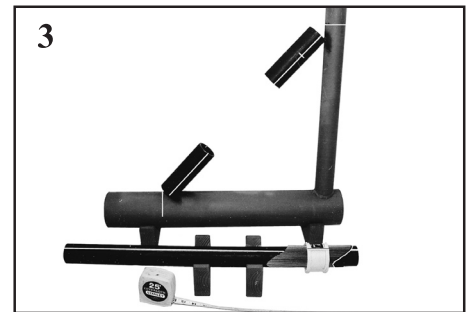
Fitting Both Ends At One Time



1
Using two stubs of pipe and a length of angle, determine the location of the pipe to be installed. Tack weld the stubs and draw centerlines on the two stubs and the pipe to be cut.



2
Slide the PipeMaster on one of the stubs with the tool centerline aligned with the pipe centerline. Adjust the pins to fit the joint and mark the location of the plastic housing on the stub.



3
Slide the PipeMaster on the pipe to be cut. Align the tool and pipe centerlines. Mark the location of the housing on the pipe and trace the shape of the cut line.



4
Slide the PipeMaster on the opposite stub with the centerlines aligned. Adjust the pins to fit the joint. Measure the distance from the housing to the mark on the first stub.



5
Transfer the distance measured in step 4 to the pipe to be cut. Slide the PipeMaster on the pipe at this location, align the centerlines and the cut line.



6
Remove stubs and grind tack welds. Check the final fit and weld in place.

Tips:

- When making patterns keep the pins as short as possible.
- When fitting both ends always use a centerline
- For difficult patterns use your fingers to adjust the pins.