

advantage range MO/MS SERIES

Flange mounted master cylinders

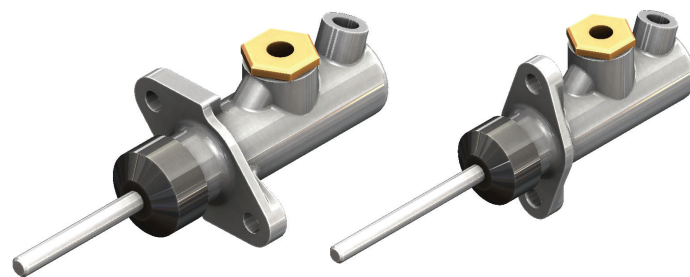
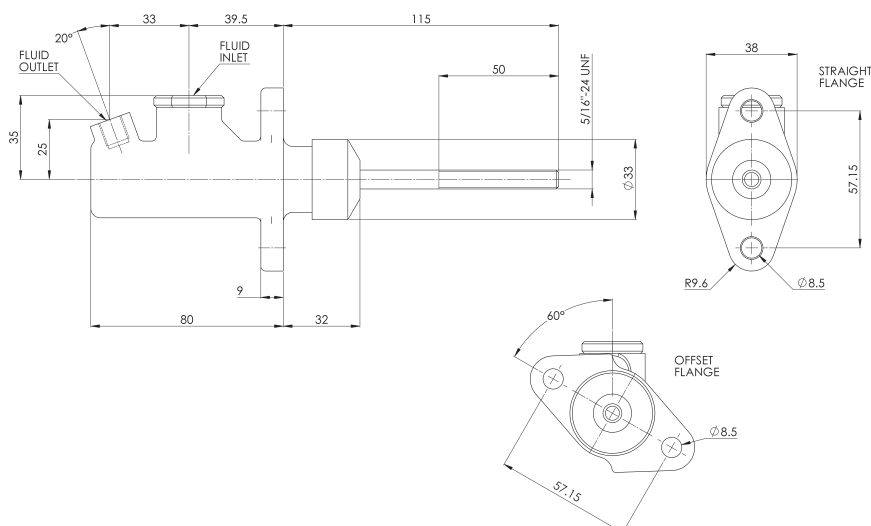
Part numbers and handing

Ø Bore	Vertical flange	60° offset flange
15.90 (0.625")	MS/625	MO/625
17.78 (0.700")	MS/700	MO/700
19.05 (0.750")	MS/750	MO/750
20.62 (0.812")	MS/812	MO/812
22.22 (0.875")	MS/875	MO/875

Replacement parts

Item	Master cylinder	Ø Bore	Seal kit
Seal kit, comprises: Primary Seal, Secondary Seal, Primary Seal Washer, Piston, Gasket, Spring and Rubber Boot	MS/625- MO/625	15.90 (0.625")	MSK1200RK
	MS/700- MO/700	17.78 (0.700")	MSK1210RK
	MS/750- MO/750	19.05 (0.750")	MSK1220RK
	MS/812- MO/812	20.62 (0.812")	MSK1230RK
	MS/875- MO/875	22.22 (0.875")	MSK1240RK
Copper gasket 0.437 UNF	FCG0080X104		
Copper gasket 0.375 UNF	FCG0080X015		

Installation dimensions



Applications

General Race and Rally use.

Key features and benefits

- Suitable for brake and clutch applications.
- Standard 57.2 (2.25") mounting centres, interchangeable with other manufacturers' master cylinders.
- Breather port clearance (cut-off travel) calibrated during assembly to provide controlled lost travel.
- Rubber dust excluder boot.
- Non-standard push rods available on request.
- Versions with non-captive push rods available on request.

Specifications

- Push rod length from flange is 115mm with 50mm thread length. Shorten push rod as required.
- Fluid inlet port 0.437-20 UNF (-4) Tightening torque 18-22Nm with a copper washer.
- Fluid outlet port 0.375-24 UNF (-3) Tightening torque 17-20Nm with a copper washer.
- To avoid trapping air, install it with the ports uppermost. The fluid outlet port must not be below the horizontal axis.
- Push rod angularity must not exceed 5° throughout the full travel.
- Weight 0.31Kg.