

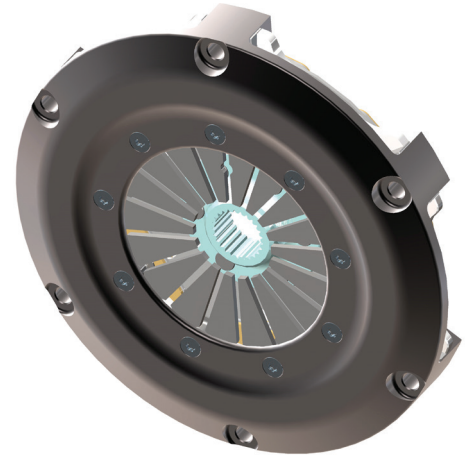
motorsport rally range **KKR1841**

ø184 (7.25") Single plate rally clutch

Specifications

Part Number	Dynamic Torque Capacity Nm (lb/ft)	Release ratio	Assembly Weight inc. Driven Plate (Kg)	Assembly Inertia inc. Driven Plate (Kg ^m ²)	Release Load New ø44 Bearing (kN)	Release Load New ø52 Bearing (kN)
KKR1841HDGSR01	334 (246)	High	2.89	0.0168	3.2	3.4
KKR1841HSGSR01	277 (204)	High	2.89	0.0168	2.6	2.8
KKR1841HORSR01	220 (162)	High	2.89	0.0168	2.1	2.25
KKR1841UDGSR01	440 (324)	Ultra	2.89	0.0168	3.2	3.4
KKR1841USGSR01	365 (369)	Ultra	2.89	0.0168	2.6	2.8
KKR1841UORSR01	290 (213)	Ultra	2.89	0.0168	2.1	2.25

Step flywheel part numbers shown. For Pot flywheel replace "SR" with "PR".
Other hub configurations are available.



Applications

General Race, Rally and Hill Climb use.

Replacement parts

Part Number	Pressure Plate (High Ratio)	Pressure Plate (Ultra High Ratio)	Pressure Plate Thickness (mm)	Pressure Plate Fulcrum Dia (mm)
KKR1841HDGSR01	KPS184L6H511	N/A	13	ø157
KKR1841HSGSR01	KPS184L6H511		13	ø157
KKR1841HORSR01	KPS184L6H511		13	ø157
KKR1841UDGSR01	N/A	KPS184L6U511	13	ø152
KKR1841USGSR01		KPS184L6U511	13	ø152
KKR1841UORSR01		KPS184L6U511	13	ø152

Key features and benefits

- Compact design for low weight and inertia.
- High stiffness cover design for improved start line control.
- Open lug type design for improved cooling and dust removal.
- Durable hard anodised finish.
- Stainless steel wear plates fitted to cover legs.
- Interchangeable with other manufacturers' products.
- Step and Pot flywheel mounting options available.

Installation dimensions

